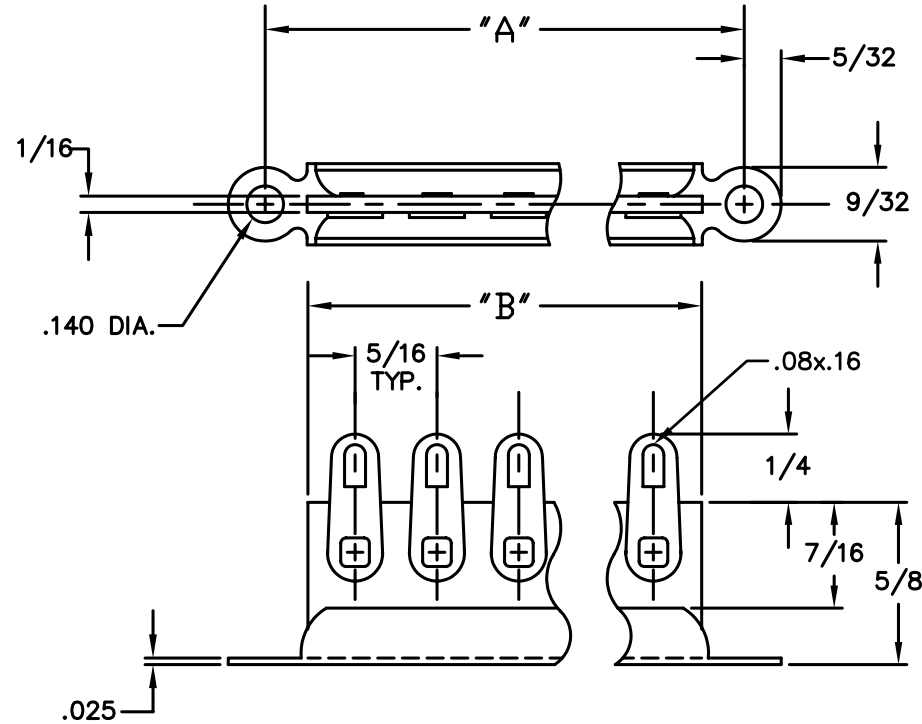


PART NO.	NO. OF LUGS	DIM. "A"	DIM. "B"
3002	2	1	.67
3003	3	1-5/16	.99
3004	4	1-5/8	1.30
3005	5	1-15/16	1.61
3006	6	2-1/4	1.92
3007	7	2-9/16	2.24
3008	8	2-7/8	2.55
3009	9	3-3/16	2.86
3010	10	3-1/2	3.17
3011	11	3-13/16	3.49
3012	12	4-1/8	3.80
3013	13	4-7/16	4.11

REVISIONS				
SYM	DESCRIPTION	REVISED BY	DATE	APPR



NOTE:

MATERIALS-

BRACKET: STEEL, TIN FINISH
LUG: STEEL, TIN FINISH
BOARD: PHENOLIC

THIS DRAWING AND THE INFORMATION THEREIN IS THE PROPERTY OF ABBATRON, LLC AND ALL UNAUTHORIZED USE OR REPRODUCTION THEREOF IS PROHIBITED.

MATERIAL: SEE NOTES		FINISH: SEE NOTES	HEAT TREAT: ---
DIMENSIONAL TOLERANCES UNLESS OTHERWISE SPECIFIED		TITLE: 3000 SERIES	
.XX	.XXX	TERMINAL STRIP	
---	---	-	
FRACTIONS	ANGLES	DRAWN: T. LORD DATE: 8/31/06	
---	---	CHECKED: T. LORD DATE: 8/31/06	
SURFACE FINISH 125		APPROVED: T. LORD DATE: 8/31/06	

ABBATRON

Electronic Connectors and Hardware
632 Arch Street, Meadville, Pa. 16335

SIZE	DRAWING NUMBER	ISSUE
A	SD-3000 SER	-